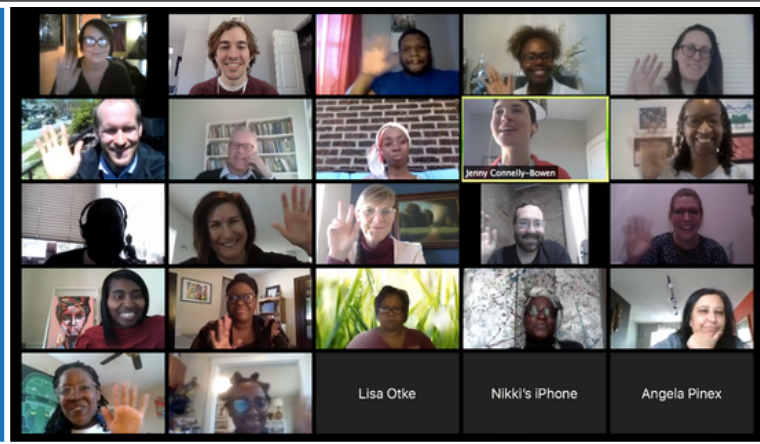
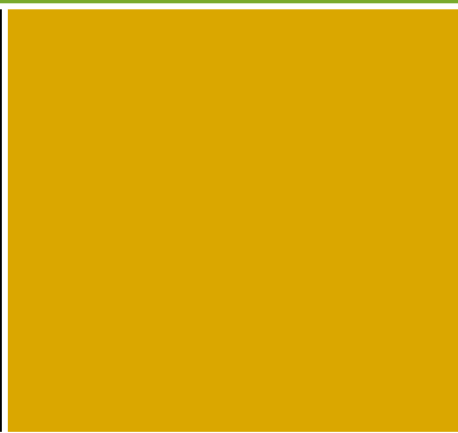
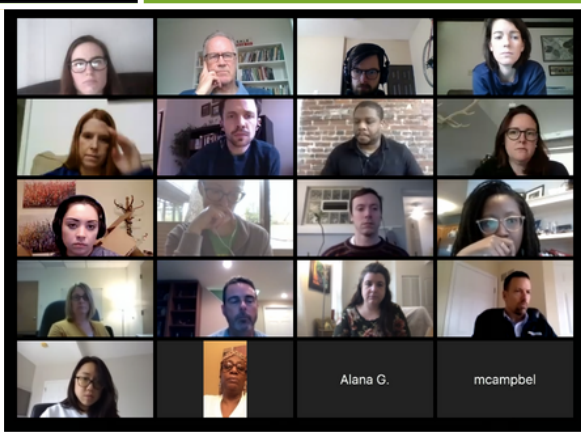
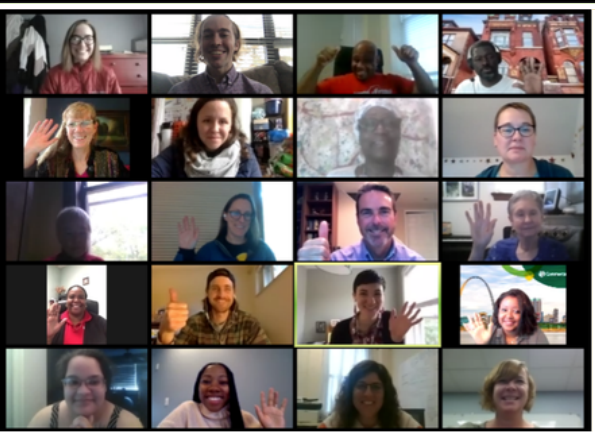


**COMMUNITY BUILDERS
NETWORK OF METRO ST. LOUIS**

Annual

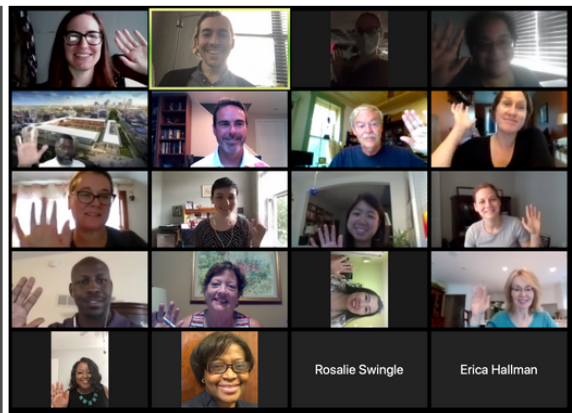


Report



2020

www.communitybuildersstl.org @CBNSTL 314-730-5449



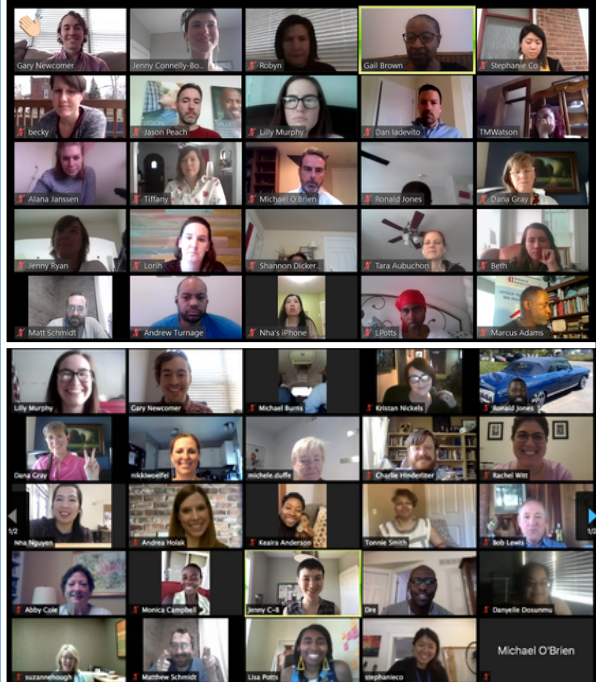
strong organizations

supporting our member organizations and their partners so they can do their best work

All-Member Zoom calls - At the onset of the COVID-19 pandemic in March 2020, CBN started hosting weekly (later monthly) All-Member Calls to hold space for members to check in, support and collaborate with each other, share resources, and lead discussion on issues they're grappling with.

Neighborhood Solidarity Fund - CBN staff was part of the technical support team for the CDC Stability funding stream under Invest STL's Neighborhood Solidarity Fund, a grant pool to help place-based entities respond to and stay afloat during the COVID-19 pandemic.

Racial Equity Workgroup - Our Racial Equity Workgroup was initially tasked with ensuring racial equity was central in our strategic planning process, but evolved to start thinking critically about how CBN needs to transform internally and externally if we want to center antiracism in all of our work.



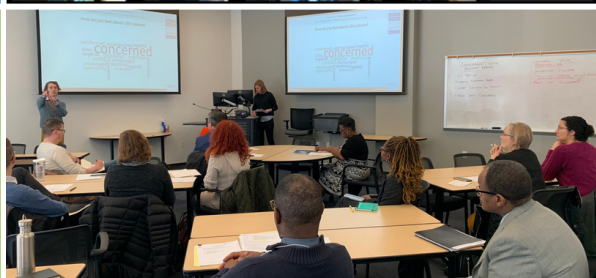
supportive systems

building bridges across places, sectors, and silos and advocating for policies that strengthens our civic muscle

Community Reinvestment Act reform - CBN gathered member organizations together to discuss proposed reforms to the Community Reinvestment Act and submitted an official comment letter based on members' insights.

St. Louis Vacancy Collaborative - The Vacancy Collaborative made progress on goals outlined in their first 18-month Work Plan to comprehensively address St. Louis' vacancy challenge. They started partnering with Tower Grove Neighborhoods CDC and North Newstead Association on their annual Landlord and Rehabber Training Series, engaged with policymakers on key priorities, and secured new sources of funding to support the work.

St. Louis CDFI Coalition - The St. Louis Community Development Financial Institution (CDFI) Coalition focused its efforts on coordinating collective impact data and stakeholder outreach and preparing a CDFI systems strategy for supporting Black and Latinx businesses.



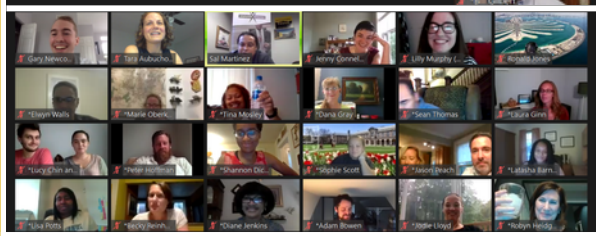
sharing stories

spreading the word about what it takes to make our neighborhoods great places to live and why strong communities matter

Virtual Community Building Awards - CBN continued partnering with Humans of St. Louis to compile photostories about our Annual Community Building Awards honorees and help spread the word about what community building looks like in practice. Due to COVID-19, we pivoted our annual celebration to a warm, genuine virtual event that was held in July 2020.

COVID-19 awareness - CBN focused our communications resources on keeping community builders connected during the COVID-19 pandemic, including by creating a COVID-19 response section on our website.

CBN Member Bright Spots Blog - CBN staff started a CBN Member Bright Spots Blog to highlight the important work our member organizations are doing in real time.



2020 CBN members

* New in 2020

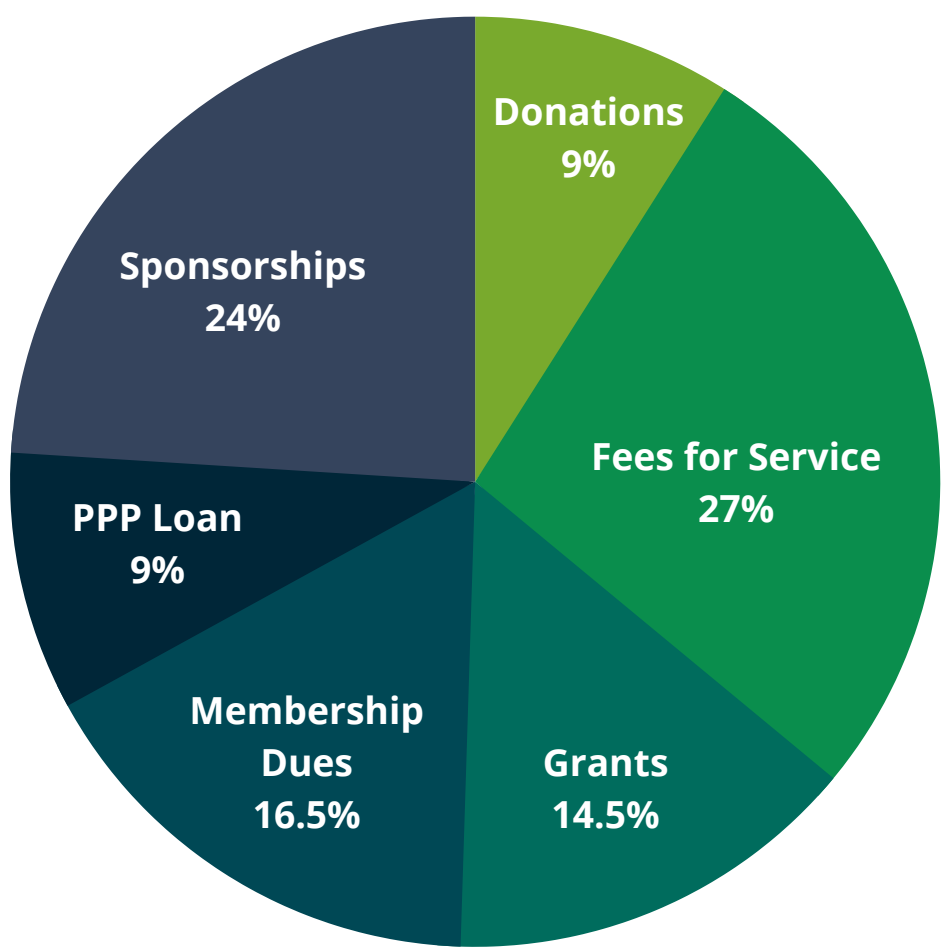
Mission Members

Beyond Housing
BRAND of St. Louis
Carondelet Community Betterment Federation
Cherokee Street Community Improvement District*
Community Action Agency of St. Louis County
Community Lifeline*
Cornerstone Corporation
DeSales Community Development
Downtown Dutchtown*
Dutchtown South Community Corporation
East Loop Community Improvement District*
East Side Heart & Home Family Center*
Greater Alton CDC
Habitat for Humanity Saint Louis
Hamilton Heights Neighborhood Organization
Hyde Park Neighborhood Association
International Institute of St. Louis CDC
Join Hands East St. Louis*
Lansdowne Community Initiative*
Lemay Development Corporation
LinkStL
Lutheran Development Group
Maplewood Special Business District*
Mt. Sinai Development Corporation*
North Newstead Association
Northside Community Housing
Old North Saint Louis Restoration Group
Park Central Development
Park Place Housing & Economic Development
Rebuilding Together St. Louis
Revitalization of Baden Association
Rise Community Development
Spanish Lake CDC
South Grand Community Improvement District*
St. Joseph Housing Initiative
St. Louis Midtown Redevelopment Corporation*
Sustainable Housing & Equitable Development (SHED)*
The Housing Partnership
Tower Grove Neighborhoods CDC
University Square CDC
Washington University Medical Center Redevelopment Corporation
Wellston Loop CDC

Supporting Members

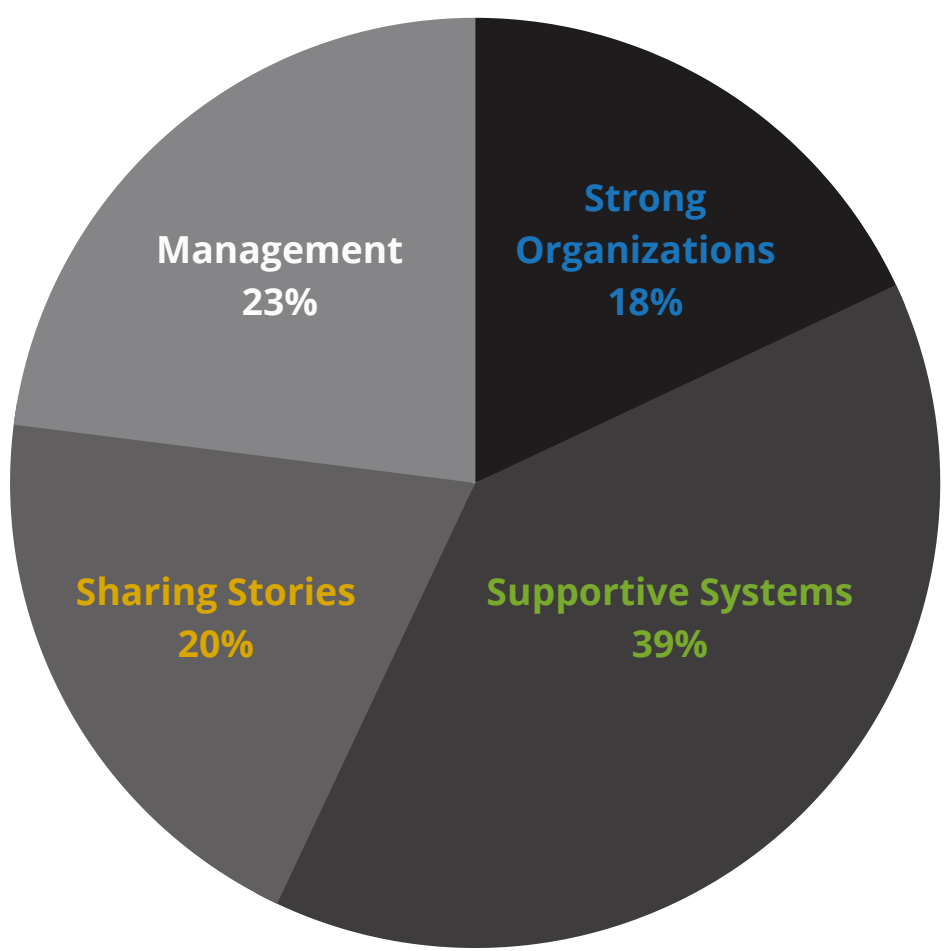
Ameren Missouri*
BMO Harris
Busey Bank
Carrollton Bank
Clark-Fox Policy Institute at Washington University
Commerce Bank
Creating Whole Communities
Development Strategies*
Enterprise Bank & Trust
FCB Banks
Forest ReLeaf of Missouri*
Gateway CDFI
Great Rivers Greenway
Great Southern Bank
Horizon Housing Foundation
IFF
Justine PETERSEN
Legal Services of Eastern Missouri
Midland States Bank
Midwest BankCentre
North County Incorporated
PGAV Planners
PNC Bank
Prosperity Connection
Rosemann & Associates
Saint Louis University Urban Planning and Development
St. Louis Association of Community Organizations (SLACO)
St. Louis Community Credit Union
St. Louis Community Foundation
St. Louis Development Corporation
St. Louis Equity Fund
St. Louis Housing Authority
St. Louis Promise Zone
St. Louis REALTORS®
St. Louis Regional Health Commission
Trailnet
U.S. Bank
U.S. Green Building Council - Missouri Gateway Chapter*
UMSL Community Innovation and Action Center (CIAC)
West Community Credit Union*
YouthBridge Community Foundation*

2020 finances



2020 Revenue

\$228,294



2020 Expenses

\$248,872

2020 sponsors and supporters

Community-Level Sponsors - \$5,000



Award Sponsors - \$4,000



Block-Level Sponsors - \$3,000



Missouri Foundation
for Health
a catalyst for change



Cup & Napkin Sponsors - \$2,000



Bar Sponsor - \$1,500

Street-Level Sponsors - \$1,000



* sponsored at \$1,500



SAINT LOUIS UNIVERSITY
URBAN PLANNING AND DEVELOPMENT

2020 sponsors and supporters

Registration Sponsor - \$1,500

Beer Sponsor



House-Level Sponsors - \$500



Your Commercial Title Specialists



SUGAR CREEK CAPITAL

Parkside Financial
BANK & TRUST



Neighborhood Backer Sponsors - \$250



GLADIATOR
consulting



2020 Friends & Affiliates of CBN - \$100

Sara Anderson
Adam Bowen
Kim Brown
Joe Cavato
Stephanie Co
Lucas Delort

Karl Guenther
Colleen & Jake Hafner
Claire & Dan Hutti
Dan Iadevito
Beth Jantz
John & Bridget Lally

Daniel Lee
Kimberly & Kevin McKinney
The Access Foundation
Staff of St. Louis Community
Credit Union

In honor of Laura Gilbert
Robyn Heidger
Suzanne Hough
Nikki Woelfel

2020 CBN board and staff

Board of Directors



Jenny Ryan
PGAV Planners
President



Stephanie Co
Beyond Housing
President-Elect



David Noble
Midland States Bank
Treasurer



Abdul-Kaba Abdullah
Park Central
Development
Secretary



Mike Burns
Northside Community
Housing



Monica Campbell
Enterprise Bank &
Trust



Laura Gilbert
Commerce Bank



Alana Green
St. Louis Housing
Authority



Colleen Hafner
Rise Community
Development



Sal Martinez
North Newstead
Association



Kimberly McKinney
Habitat for Humanity
Saint Louis



Timetria Murphy-Watson
Urban Strategies



Tom Pickel
DeSales Community
Development



Angela Pinex
Spanish Lake CDC



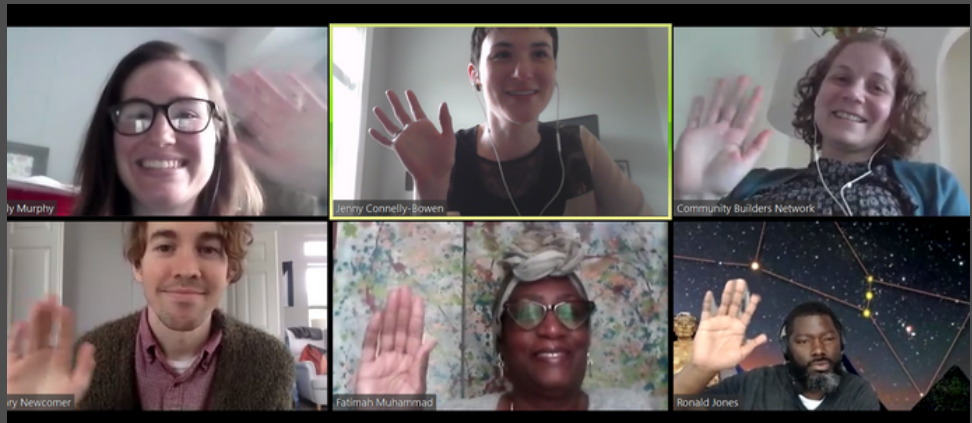
Sean Spencer
Tower Grove
Neighborhoods CDC

Staff *from top left*

- Lilly Murphy, Vacancy Collaborative VISTA
- Jenny Connelly-Bowen, Executive Director
- Tara Aubuchon, Vacancy Coordinator
- Gary Newcomer, Director of Operations
- Fatimah Muhammad, Partnership Coordinator
- Ronald Jones, Vacancy Collaborative VISTA

Not pictured

- Alana Janssen, Practicum Student
- Beth Kernaghan, Practicum Student
- Reina Stovall, Funding & Communications VISTA



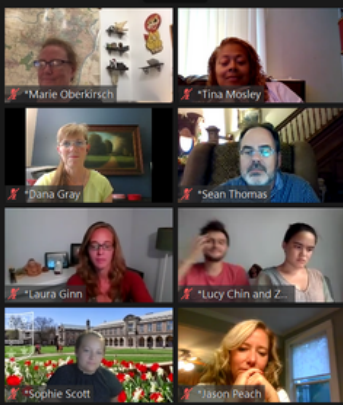


Thank you to our member organizations,

who held so many communities up



during an incredibly challenging year



and still found space



to connect and share support, together.

