



COMMUNITY BUILDERS
NETWORK OF METRO ST. LOUIS

Annual Report 2018



Thank you.



When I moved to St. Louis in 2012, it didn't take me long to notice how closely linked our community's networks are. It seemed like half the people I met were somehow connected to other people I knew. "Two degrees of St. Louis," friends often said about that. It felt like a kind of warm welcome, softened the sensory overload that comes with being new somewhere.

It took me longer to understand that these close relationships can take on a double edge when they govern without transparency. When our communities are small and navigable, it feels natural to focus our work at a human-to-human level. But when power aligns too closely with who knows whom—when it doesn't leave room for process, or hides behind closed doors—it's easy for that power to be abused.

The Community Builders Network was formed, in part, as a response to both these realities. When our founding members, over 30 community building nonprofits, gathered in 2011 for CBN's first meeting, stronger relationships and more transparent collaboration were central to what they hoped to achieve as a collective. Today, CBN's work is still guided by that group's original goals: to build an inclusive table for peer support and shared learning in the community development world, and to advocate around community building issues with a shared voice. These members believed deeply that together, we are smarter, stronger, and more resilient.

There are choices we can all make in our everyday work and play to ensure that the St. Louis community's close human-to-human ties are built for **everyone**. We can choose to share our connections and support for each other generously. We can choose to act and decide openly and honestly. CBN exists because **you**—our member organizations, partners, sponsors, and supporters—have chosen and keep on choosing to live by these values every day. We're so grateful for your partnership in this work.

Recently, CBN's staff had the opportunity to participate in Crossroads Anti-Bias, AntiRacist training, and it stirred up a lot of questions for us as a team. As we continue to strive for clearer transparency, stronger collaboration, and honest growth in 2019, we hope you'll join us in asking reflectively: Who are my relationships benefiting? Who are they harming? Who's missing from our table, and why? How can we change that?

We invite you too to hold **us** accountable with these questions—and with your own—as we work to keep equity, community leadership, and community voice at the center of everything we do in the years ahead. **Thank you all for everything you share as partners at our tables, and as partners of St. Louis' neighborhoods.**

With gratitude,

Jenny Connelly-Bowen
Executive Director

Contents

Our Work, Mission, & Vision	2
2018 Highlights	4
CBN Members	8
2018 Organizational Assessment Recap	9
Finances & Fund Development	11
Sponsors, Friends, & Affiliates	12
CBN Board & Staff	15

Strong Organizations



Supportive Systems



Photo by Troy Anthony Photography

Sharing Stories



Photo by Campfire

CBN gathers community leaders of all backgrounds to build engaged and equitable neighborhoods.

Vision

As a network, CBN envisions a St. Louis region where all people live in safe, economically strong, and vibrant neighborhoods and all community-based organizations are sustainable, supported, and valued.



We believe strong, inclusive communities are the building blocks for a better St. Louis. CBN supports, connects, and celebrates neighborhood and regional leaders who make these places possible by focusing its work on three fronts, each of which is shaped and supported by a working committee.

Strong Organizations:
Supporting our members and their partners so they can do their best work

Supportive Systems:
Building bridges and advocating for policy that strengthens civic muscle

Sharing Stories: Spreading the word about what it takes to make our neighborhoods great places to live

Strong Organizations



The 2018 Ladder of Capacity Building Series supported four participants as they planned new partnerships for their organizations.



The CBN-supported Community Engagement Action Group transitioned to a member-driven model and began mapping the region's community engagement anchors.



CBN's Organizational Capacity Building Committee worked with UMSL's Nonprofit Management & Leadership Program to host several capacity-building workshops.



The Affordable Housing Trust Fund (AHTF) Coalition successfully advocated for a \$1 million increase in funding for the AHTF in the City of St. Louis.



MOWHA & CBN's Civic Capacity Building Committee partnered on a roundtable discussion and other efforts about how CBN members can advocate for LIHTC in 2019.

St. Louis' Vacancy Collaborative launched by gathering almost 200 people to discuss how we can all tackle our vacancy issues together going forward.



Supportive Systems

Sharing Stories



We honored eight community organizations & leaders at our 2018 Community Building Awards & topped our highest fundraising goal to date thanks to your generous support.



COMMUNITY BUILDERS
NETWORK OF METRO ST. LOUIS

[ABOUT US](#)

[WHAT WE DO](#)

[SUPPORTED COALITIONS](#)

[GET INVOLVED](#)

[CONTACT US](#)

[DONATE](#)

**STRONG COMMUNITIES.
STRONG ST. LOUIS.**

[ABOUT US](#)

CBN's redesigned website, launched in October 2018, aims to be a friendly, welcoming space where people can learn about & connect with St. Louis' community builders & their stories.

[View this email in your browser](#)

September 12, 2018

St. Louis
Community
Builders

Exchange



News, Opinion, and Resources for Building Better St. Louis Neighborhoods

The redesigned Community Builders Exchange newsletter, released in March 2018, draws on reader ideas for making it more readable & user-friendly.

Along with our partners at UMSL's Community Innovation & Action Center, CBN officially moved offices to the Grand Center neighborhood at the end of 2018 to be more centrally located within our network & have access to a more community-centric facility.



CBN is a member of NACEDA, an alliance of 40 state & regional community development associations across the country, where we learn best practices to bring back to St. Louis.

Did you know?

CBN members voted to self-institute membership dues in 2015 to fund staff that could be fully dedicated & directly responsive to the needs of our community building nonprofits.



CBN supports seven (7) community-based coalitions that work across sectors on systems change work in racial equity, community engagement, housing, & more.

Mission Members

Carry out place-based work focused on community development, economic development, and affordable housing.

Beyond Housing

BRAND Foundation*

Carondelet Community Betterment Federation

Community Action Agency of St. Louis County

Cornerstone Corporation

DeSales Community Development

Dutchtown South Community Corporation

Emerson Park Development Corporation

Grace Hill Settlement House

Greater Alton CDC

Habitat for Humanity Saint Louis

Hamilton Heights Neighborhood Organization

The Housing Partnership, Inc.

International Institute of St. Louis CDC

Kingsway East Conservation Association

Lansdowne Community Initiative

Lemay Development Corporation

LinkSTL

Lutheran Development Group

Lutheran Housing Support

North Newstead Association

Northside Community Housing, Inc.

Old North St. Louis Restoration Group

Park Central Development

Project 180 STL

Rebuilding Together St. Louis

Rise Community Development

Riverview West Florissant Development Corporation

Skinker DeBaliviere Community Council

Spanish Lake CDC

Tower Grove Neighborhoods CDC

University Square CDC

Washington University Medical Center

Redevelopment Corporation

Wellston Loop CDC

Supporting Members

Support the place-based work of CBN members and partners with resources, connections, and expertise.

TheBANK of Edwardsville

BMO Harris

Busey Bank

Carondelet Business Association

Carrollton Bank

The Clark-Fox Policy Institute*

Commerce Bank

Creating Whole Communities

Enterprise Bank & Trust

FCB Banks*

Gateway Community Development Fund, Inc.

Horizon Housing Foundation

IFF

Justine PETERSEN

Midland States Bank

Midwest BankCentre

ND Consulting

North County Incorporated

PGAV Planners

PNC Bank

Prosperity Connection

Reliance Bank

Rosemann & Associates, P.C.*

Rung*

Saint Louis University Urban Planning & Development

St. Louis Association of Community Organizations

St. Louis Civil Rights Enforcement Agency

St. Louis Community Credit Union

St. Louis Community Foundation

St. Louis Development Corporation

St. Louis Equity Fund, Inc.

St. Louis Housing Authority*

St. Louis REALTORS®

St. Louis Regional Health Commission

Trailnet

UMSL Community Innovation & Action Center

Urban Strategies

U.S. Bank

Washington University in St. Louis

2018 CBN Members

*New in 2018

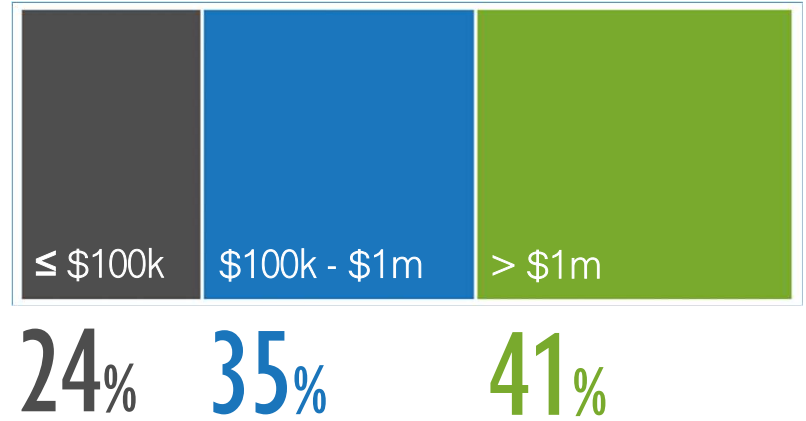
Organizational Assessment 2018

Each year, CBN's community-building nonprofit members complete this survey to both self-assess and to help our network and external stakeholders better understand the strengths and needs of the St. Louis region's community building sector.

Key Stats

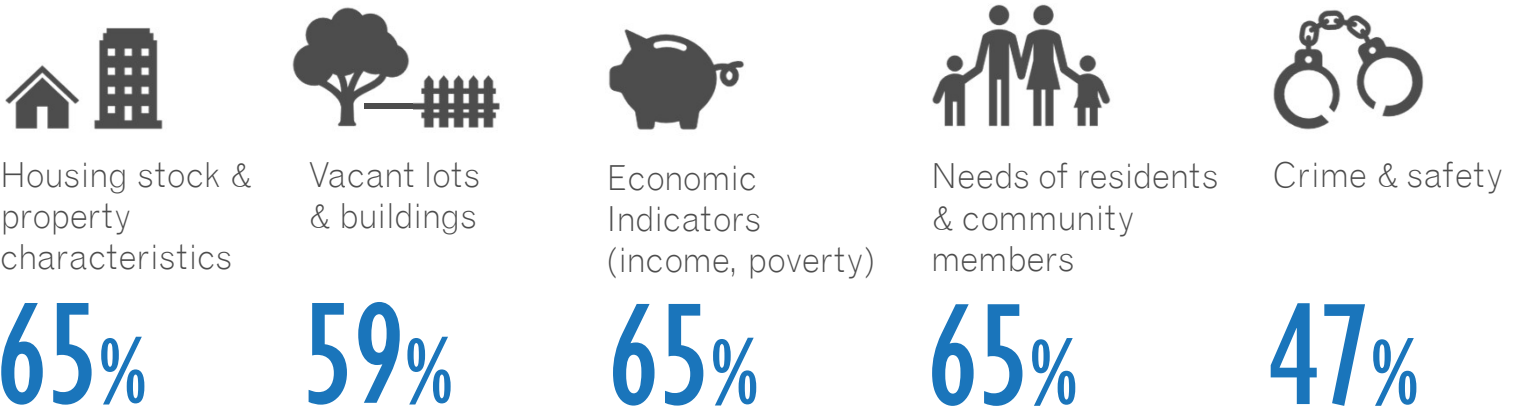


operating budgets of all sizes



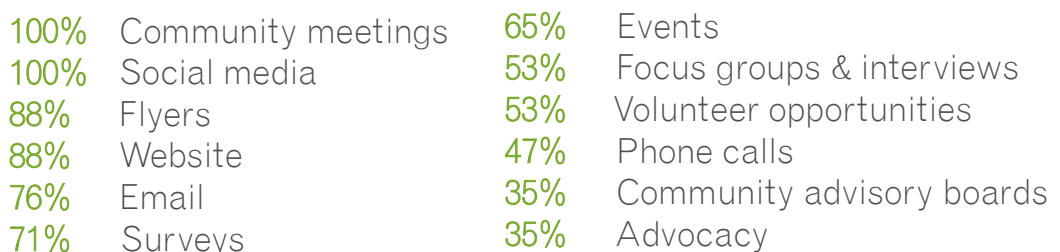
Deep Local Knowledge

What information/data do you collect or store about your target area?



88% Have relied on ongoing community engagement or a formal engagement process to identify their target area's most critical needs, assets, & goals

Community Engagement Practices

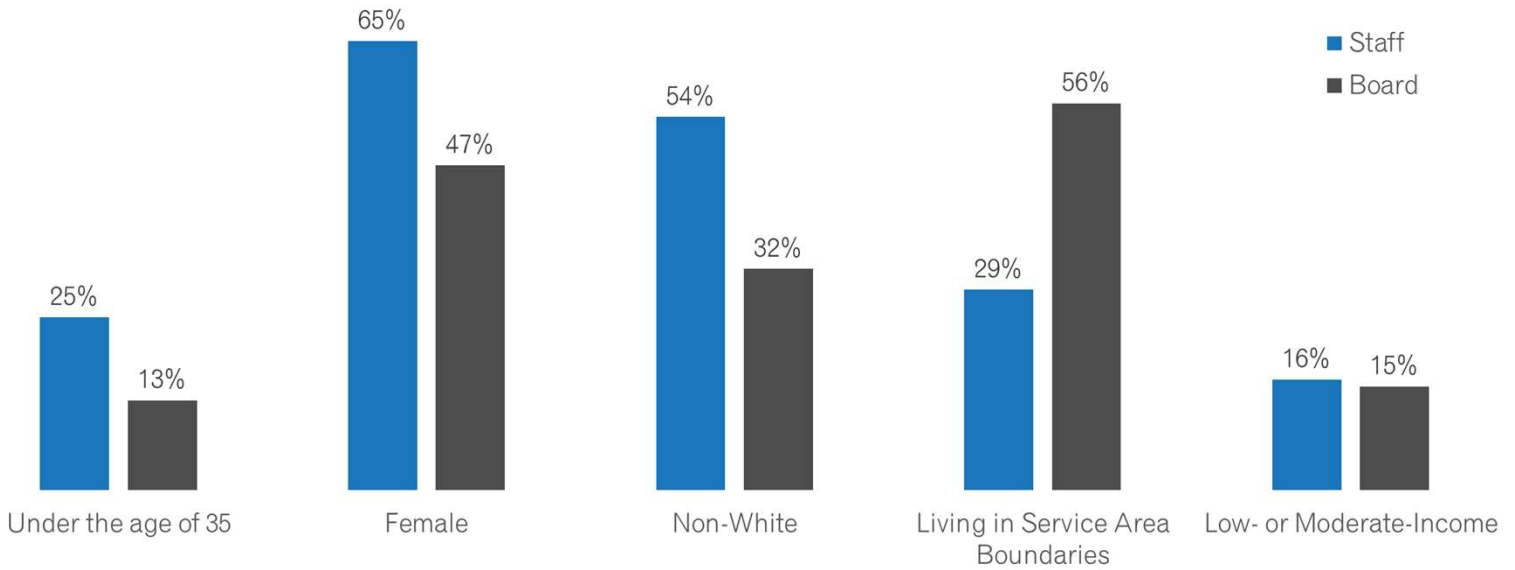


Organizational Assessment 2018

Each year, CBN's community-building nonprofit members complete this survey to both self-assess and to help our network and external stakeholders better understand the strengths and needs of the St. Louis region's community building sector.

Equity & Inclusivity

CBN member averages



Revenue Streams

+ average share of budget for members who use each

used by most 65% of members

Government	43% of budget
Revenue generating programs	38% of budget
Individual or household donors	7% of budget

used by some 24%-41% of members

Endowment, investment, interest	20% of budget
Other institutions (civic/religious)	37% of budget
Foundation(s)	18% of budget

CBN Members: 2018 in Review*

* 17 community-building nonprofit members took the 2018 assessment

100

housing units produced

245

homes repaired or preserved

107

vacant lots cleaned or maintained

200

businesses low- & moderate-supported

9,045

low- & moderate-income people served

member success stories

- Completed Intersect Arts Center
- Held a home repair summit
- Created Vacancy Guide for City of St. Louis
- Launched tenant rights organizing work
- Created affordable homes for local families
- Advanced the work of Invest STL
- Developed key partnerships with nonprofits locally & outside the region
- Provided home repair & elderly services
- Sold property to a nonprofit partner that supports success of local women
- Assisted with zoning issues

Finances & Fund Development

Dues-Paying Member Organizations

70+
members
strong

St. Louis City
St. Louis County
Madison County
St. Clair County

34 do place-based work that's deeply rooted in local neighborhoods

39 support place-based work with resources, connections, & expertise



community building nonprofits



anchor institutions



government



lenders



local business



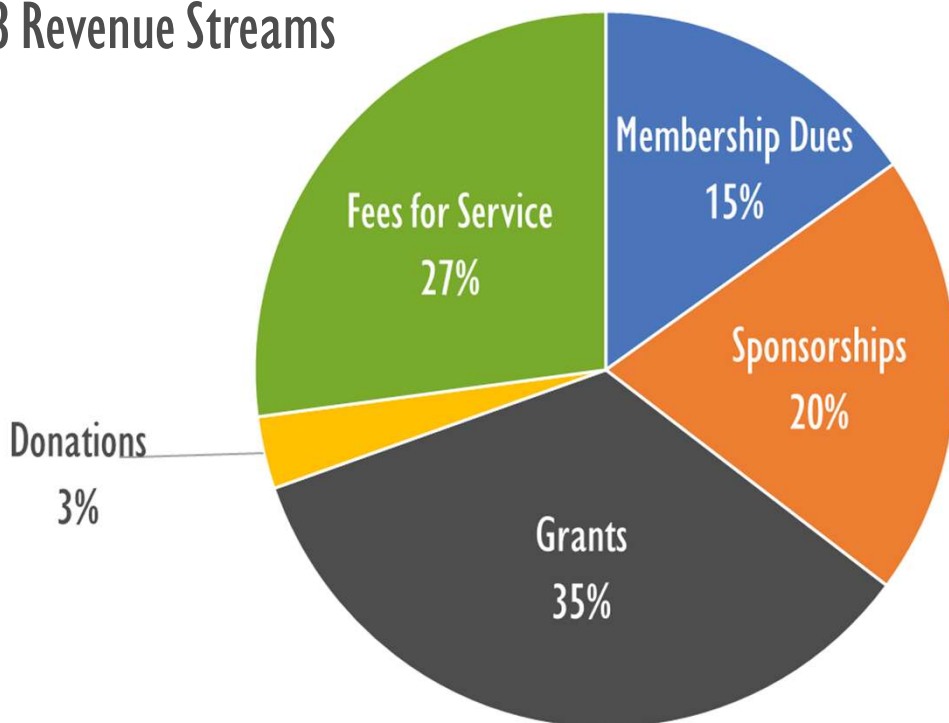
philanthropy



private developers

Finances

2018 Revenue Streams



2018 Total Revenue

\$202,961

2018 Total Expenses

\$158,825

2018 Sponsors, Friends, Affiliates

Community Level Sponsors - \$5,000



Block Level Sponsors - \$3,000



Street Level Sponsors - \$1,000



2018 Sponsors, Friends, Affiliates

House Level Sponsors - \$500



Opportunity Sponsorships & Special Thanks



2018 Friends & Affiliates of CBN

Adam Bowen
 Sara Bowen
 Susan & Maurice Bowen
 Emily Bowen-Marler & Travis Marler
 Joe Cavato
 Stephanie Co

Fran & Mac Connelly
 Colleen & Jake Hafner
 Claire & Dan Hutti
 Kimberly & Kevin McKinney
 Staff of St. Louis Community Credit Union

CBN 2018 Board & Staff

Board of Directors



Kimberly McKinney
President
Habitat for Humanity
Saint Louis



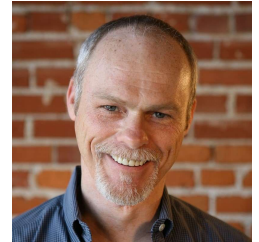
Jenny Ryan
Vice President
PGAV Planners



Sean Spencer
Treasurer
Tower Grove
Neighborhoods CDC



Abdul Kaba-Abdullah
Secretary
Park Central
Development



Stephen Acree
Rise Community
Development



Michael Burns
Northside
Community Housing



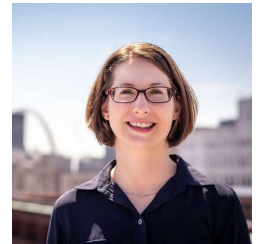
Stephanie Co
Beyond Housing



Enrique Flores
University Square CDC



Laura Gilbert
Commerce Bank



Colleen Hafner
Rise Community
Development



Sal Martinez
North Newstead
Association



Nathan Nelson
Enterprise Bank
& Trust



Brian Phillips
Washington University
Medical Center
Redevelopment Corp.

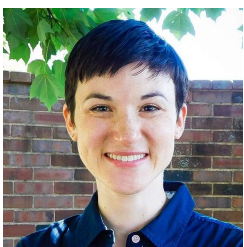


Angela Pinex
Spanish Lake CDC



Thomas Pickel
DeSales Community
Development

Staff & Advisors



Jenny Connelly-Bowen
Executive Director



Gary Newcomer
Director of Operations



Tara Aubuchon
Vacancy Coordinator



Todd Swanstrom
Co-Founder & Advisor



Karl Guenther
Co-Founder & Advisor



Thank you to CBN's member organizations for making this work possible . . . and fun.